

Summer holidays

Summer holidays are fast approaching so if you are interested in some leisure opportunities for your children have a look below...

Leisure for Autism



Leisure for Autism have used Inscape Cheadle and Salford as their operating base for their summer play schemes for many years. They look after youngsters with autism and provide a minimum of one-to-one support. Many of their staff have experience of working with children with ASC, often in special schools or ASC specific services including some who work for Inscape or other Together Trust services. Whilst they use Inscape schools as a base, their activities all take place off site and include country walks, soft play, pony riding and trips to the beach. Children are dropped off at 10am and collected again at 3pm, giving the wider family a full five hours to themselves – bliss!

The Leisure for Autism Saturday Club started at the beginning of 2010 and whilst there continues to be good demand for the summer scheme, there have been some months when only six youngsters have attended the Saturday Club. It would be good to add some new members to the club so please get in touch if you're interested.

Full details and application forms for both the summer schemes and/or the Saturday Club can be found on the website, www.leisureforautism.org, or you can email John Corker or Mark Singleton via info@leisureforautism.org



Teenage Activity Group

Stockport summer project

This project will run for four weeks during the summer break and is funded by Stockport MBC for children from Stockport who are at Inscape or elsewhere in the authority. It will be run by Inscape and Together Trust staff and sits alongside the Leisure for Autism scheme that is also run on site.

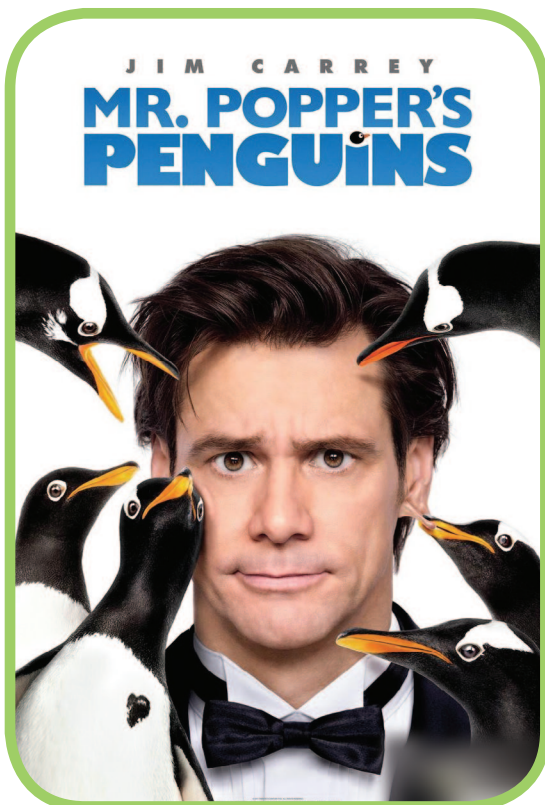
The Leisure for Autism scheme supports children who need individual support across the school ages.

The Teenage Activity Group is intended for older children who have some emerging independence, need a lower level of support and who would be doing community based activities. This group is supported at a 'two youngsters to one adult' level to do a variety of interesting things. The programme would be similar to last year which included swimming, maize maze, bikes, golf, orienteering, bowling, cinema, adventure trail, water sports, visits to the seaside and historic houses etc. There will be a parental contribution of £10 per day which will include all activity costs.

For more details please contact Bill Taylor at Inscape Cheadle. 0161 283 4750 or billtaylor@togethertrust.org

Autism Friendly Films

A special nationwide screening of an 'Autism Friendly Films' showing of Mr Popper's Penguins (PG) will take place to raise awareness of the sensory differences experienced by people with autism, and to promote the cinema-going experience for people on the autism spectrum.



The initiative will be held in ODEON cinemas throughout the country on **August 11th**. It is being jointly run by Dimensions, a not-for-profit provider for people with autism and learning disabilities and ODEON.

The partnership will mean that people who can sometimes be excluded from going to the cinema – due to either the lights or volume – will be able to watch the film in an environment suited to their needs.

A full list of participating cinemas can be found at www.dimensions-uk.org/autismfilms

Useful websites for holiday activities

Here are a few websites that may give you ideas for days out and activities:

The National Autistic Society

Information about autism friendly holidays and days out www.autism.org.uk/living-with-autism/out-and-about/holidays-and-days-out.aspx

Day out with the kids

www.dayoutwiththekids.co.uk

North West Scene

www.northwestscene.co.uk/html/days_out.php

Fun for all

www.funforall.co.uk

The National Trust

www.nationaltrust.org.uk

Siblings support

Inscape House School is planning on running some sibling support sessions later in the year and we are hoping that parents can help us plan and design what these sessions will look like.

Taster sessions

On Wednesday October 5th we are going to run two taster sessions, one in the afternoon and one in the evening, for parents to come along to and have a look at the resources we have, share ideas and give us some feedback.

Please make a note of this date and we will write to you at the beginning of the new school year in September with further information.

Sue Whitehead, Bill Taylor and Suzie Franklin

Family activities

We've had a couple of really successful family trips to Chester Zoo and The Chestnut Centre in the last few months. Families have enjoyed these, especially as transport is available if needed, they can go together as a whole family and they can meet other families. Bill and Suzie have been on hand to chat to parents and support if they have needed extra help, as well as driving the minibuses from both schools.

Future dates for family activities

Sunday 10th July

A walk around Jumbles Reservoir, Bolton

Sunday 18th September

A walk around Dovestones Reservoir, Saddleworth

Tuesday 25th October (half term)

Walk or bike ride, you can choose. The Middlewood Way, Bollington, Cheshire

Sunday 27th November

Delamere Forest, Cheshire orienteering and walk

Sunday 11th December

Bowling at Hollywood Bowl, Ashton, Manchester

You should have already received the letter about the walk at Jumbles reservoir in Bolton on Sunday 10th July and we will send more information about the other family activities nearer the time but please make a note of the dates if you would like to join us.

Thanks, Bill Taylor and Suzie Franklin



Holiday insurance for people with autism

If you were going on holiday with your son or daughter with autism would you know or even think about declaring they had autism for travel insurance?

A parent asked me a couple of years ago if they needed to declare their child's autism for travel insurance and I made some enquiries then which suggested it was best to state the autism. Some insurance companies were saying if the autism wasn't declared the policy could have been invalid in the event of a claim, as all conditions should be declared.

Most of us would think we only had to declare medical conditions but a majority of insurance companies now want to know if a person has a condition such as autism and will ask specific questions about neurological conditions (which is where autism usually comes on the forms, alongside things like depression, anxiety and mental health problems). If you tick yes to autism further questions around behaviour sometimes come up too.

I have recently been on the internet to get travel insurance quotes for my 20 year old daughter Jennie, who has autism and a learning disability, and was shocked that some insurance companies wouldn't provide a quote or insure her. However, I did get some quotes but they ranged between £44 and £96 for a week in Spain! This is still considerably more than most people would pay who have no other medical conditions but I thought some families might find this information helpful (however annoying it is!) if they are planning a holiday this summer.

Suzie Franklin, Family Liaison Worker